



ALL ALASKA  
PEDIATRIC  
PARTNERSHIP



# All Alaska Pediatric Partnership

The All Alaska Pediatric Partnership is a catalyst for improvements in Alaska's systems and services for children and their families.

## Mission

A2P2 transforms systems of care and increases equitable access to health care and related services to ensure all Alaska's children reach their full potential.

## Vision

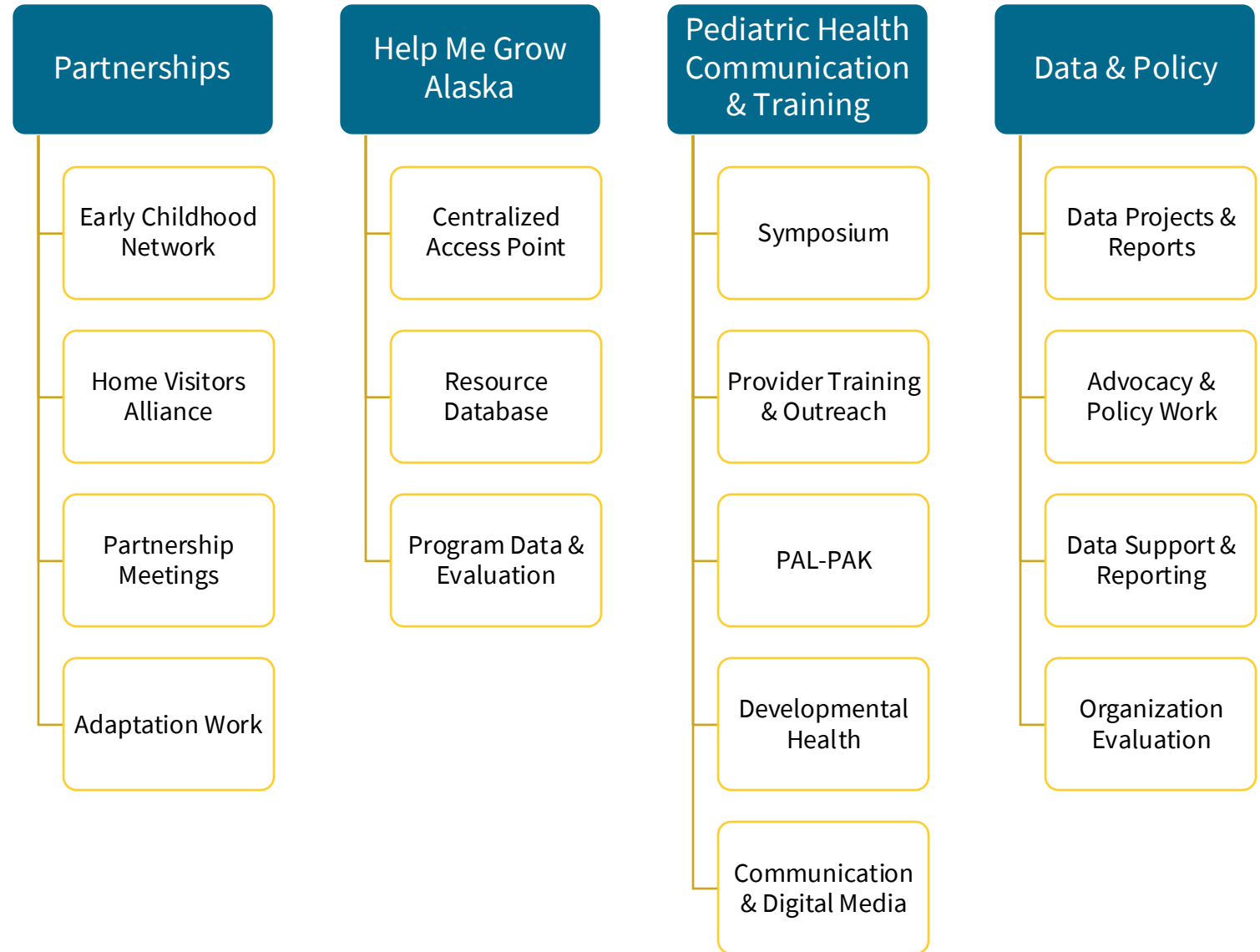
The All Alaska Pediatric Partnership will become the leading organization advancing the goal of healthy and thriving children and families throughout Alaska



Learn more at [a2p2.com](http://a2p2.com) or by scanning the QR code



# A2P2 Programmatic Work Areas



A2P2 Partnership Meetings are hosted in various regions across the state. They link the medical community with the agencies and organizations providing services and support for children, youth, and their families.

A2P2 Partnership Meetings are also shared live through a virtual platform to accommodate statewide participation.



## PARTNERSHIP MEETINGS



A2P2 Partnership Meetings are hosted in various regions across the state. They link the medical community with the agencies and organizations providing services and support for children, youth, and their families. A2P2 Partnership Meetings are a space for connecting, networking, and collaborating within and between communities. These meetings are a wonderful opportunity for those who work with children and youth to learn about what is happening around the state, both from a medical and community resource perspective.

A2P2 Partnership Meetings are also shared live through a virtual platform to accommodate statewide participation.

### DATES & TIMES:

Typically the first Friday of every month, September through May.  
12:00 - 1:30pm. Live streaming begins at 12:15pm.

email: [contact@a2p2.com](mailto:contact@a2p2.com)

[www.a2p2.org/community/partnership-meetings/](http://www.a2p2.org/community/partnership-meetings/)

[https://us02web.zoom.us/join/joinMeeting?meetingRef=170uc-uhqD4pHNLKn95HbBq0jfNo\\_UqVqVyl#/registration](https://us02web.zoom.us/join/joinMeeting?meetingRef=170uc-uhqD4pHNLKn95HbBq0jfNo_UqVqVyl#/registration)





ALL ALASKA  
PEDIATRIC  
PARTNERSHIP

## 2025 Partnership Meetings:

January 3rd: Anchorage  
February 7th: Juneau  
March 7th: Mat-Su  
April 4th: Fairbanks  
May 2nd: Homer



ALL ALASKA  
PEDIATRIC  
PARTNERSHIP

# Anchorage

## Partnership Meeting

**Friday, January 3, 2025**

**Noon -1:30 p.m.**

*Live streaming begins at 12:15 p.m.*

*Lunch provided for in-person attendees*

**Southcentral Foundation  
Corporate Board Room  
4501 Diplomacy Dr.  
Anchorage, AK 99508**

The Corporate Boardroom is located on the  
2nd floor of the SCF Admin Building



Scan here to register  
for virtual attendance

**Southcentral  
Foundation**





# Home Visitors' Alliance Summit 2025

Link to register:

[https://uaa.co1.qualtrics.com/jfe/form/SV\\_6hZyCb9CwpmBsIS](https://uaa.co1.qualtrics.com/jfe/form/SV_6hZyCb9CwpmBsIS)



## AK HOME VISITORS' ALLIANCE SUMMIT 2025

JANUARY 24, 2025 | 9 AM - 4 PM | VIRTUAL

**REGISTER TODAY**



*Together for Families. Together for Growth.*

**FREE TO PARTICIPATE**

QUESTIONS?  
CONTACT REANNE HONEMANN-QUEJA  
AT [HVA@A2P2.COM](mailto:HVA@A2P2.COM) OR  
907.885.4012.



Click on the image to  
subscribe to the bulletin.



# JOIN THE ALASKA HOME VISITORS' ALLIANCE BULLETIN!

SUBSCRIBE TO RECEIVE  
UPDATES ON  
TRAININGS,  
COMMUNITY NEWS,  
EVENTS AND  
RESOURCES!

ALL ALASKA



PEDIATRIC  
PARTNERSHIP





# Help Me Grow Alaska

*A program of the All Alaska  
Pediatric Partnership*

## Connecting Alaskan Children and Families to Resources and Support

We help connect families, caregivers, providers, and agencies with local resources available in their community.



# Centralized Access Point (CAP) Call Center

Family Support Specialists are available by phone Monday through Friday 8am-5pm to answer questions, provide support and follow-up, as needed.

We serve the entire state of Alaska at no cost.

We serve families and individuals prenatally to 26 years old.

In addition to our CAP, we can also assist families and providers through our secure fax line and website submissions.



# What Help Me Grow Alaska is **NOT:**

## **1. The service/therapy provider.**

## **2. Long term care coordination.**

- We will stay with a family for approximately a month to ensure connection to the necessary services and resources, and follow up to ensure satisfaction with the care that was received.

## **3. Experts in individual child and family situation.**

- We'll collaborate to ensure a family is connected to the services and resources that best suit family's needs. We take a family centered approach.

HelpMeGrowAK.org



# What to Expect when working with Help Me Grow Alaska:



An initial phone  
call with in 24  
hours.



Confidentiality.



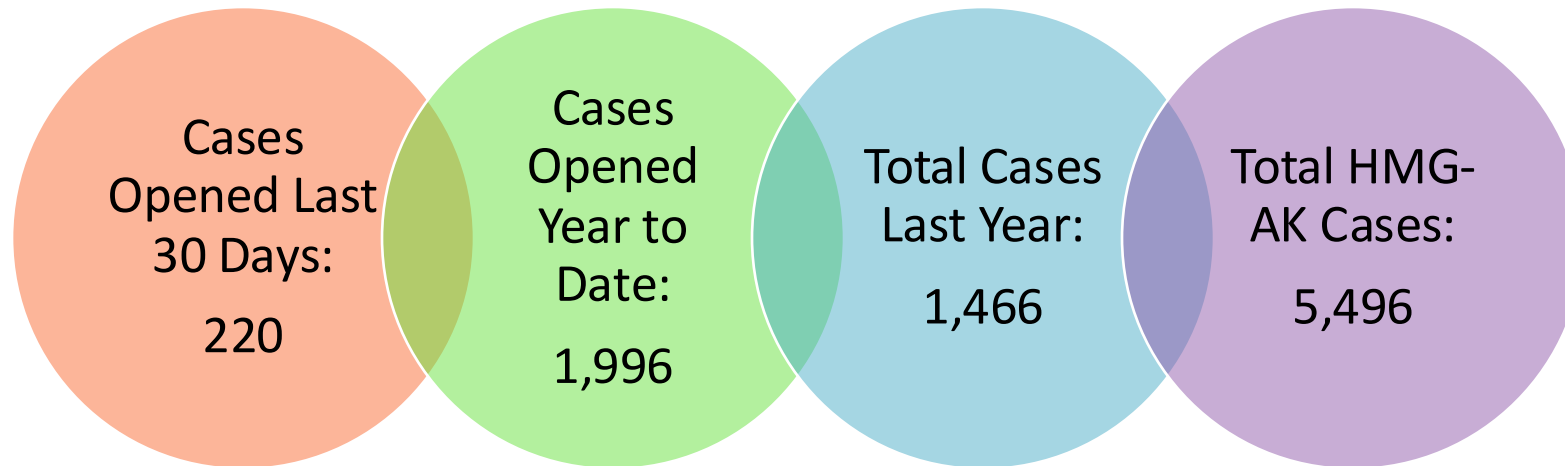
Resource  
information  
within 48 hours.



A caring and  
supportive  
experience.

# What Does the Data Look Like?

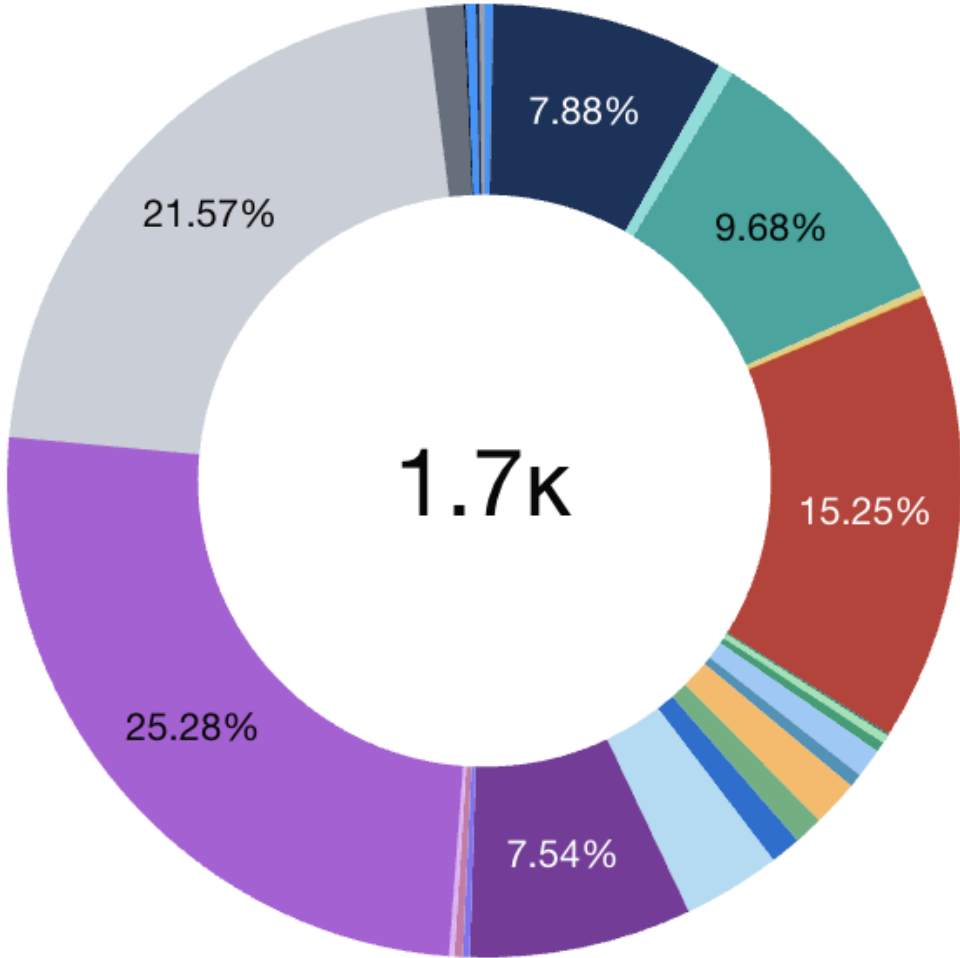
## Case Numbers from the Centralized Access Point (CAP)



\*Updated December 10, 2024

# Primary Reason for HMG-AK Call 2024

- Adaptive ●
- Basic needs ●
- Behavior ●
- Childcare ●
- Cognitive or learning difficulty ●
- Communication ●
- Diagnosis ●
- Education ●
- Family functioning ●
- Fine motor ●
- General development (for typically developing child) ●
- Developmental concern ●
- Developmental screening ●
- General information ●
- Gross motor ●
- Health or medical concern ●
- Health insurance ●
- Hearing ●
- Living condition ●
- Mental health ●
- Neuropsych Eval Referral ●
- Parent support ●
- Pre-Natal Drug/Alcohol Exposure (FASD, etc.) ●
- Social interactions ●
- Vision ●



\*As of November 1, 2024\*



# Amazing Books

**Amazing Me – It's Busy Being 3!"**

**"Where is Bear? – A Terrific Tale for 2-Year-Olds"**

**"Baby's Busy Day – Being One is So Much Fun!"**

- Children's books adapted for Alaska
- Milestones highlighted throughout story
- Parent section includes age-appropriate milestones, tips, when to act early

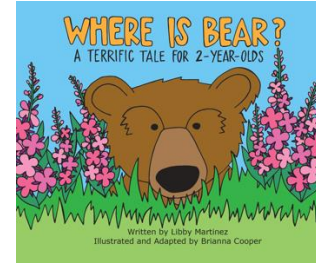
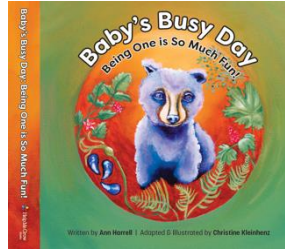




# Help Me Grow Alaska

A program of the  
All Alaska Pediatric Partnership

To order materials scan the QR code or visit:  
[a2p2.org/help-me-grow-alaska/](http://a2p2.org/help-me-grow-alaska/)



*Help Me Grow Alaska has outreach materials which describe our program and services, including contact information to speak to our Family Support Specialists in our call center and information on how to refer a family for services and supports.*

*We have PAL-PAK Care Guides, brochures, rack cards, one-page description sheets (in both color and black and white) coloring sheets with our new illustrations on one side and description sheets on the other, labeled crayon packs, Alaskan versions of the CDC Milestone Moments booklets and several other materials.*

All of our materials are available, free of charge, to organizations and providers serving children & families.

*All books must be provided to families free of charge, and any organization receiving the books is prohibited from profiting from the use or distribution of these materials.*





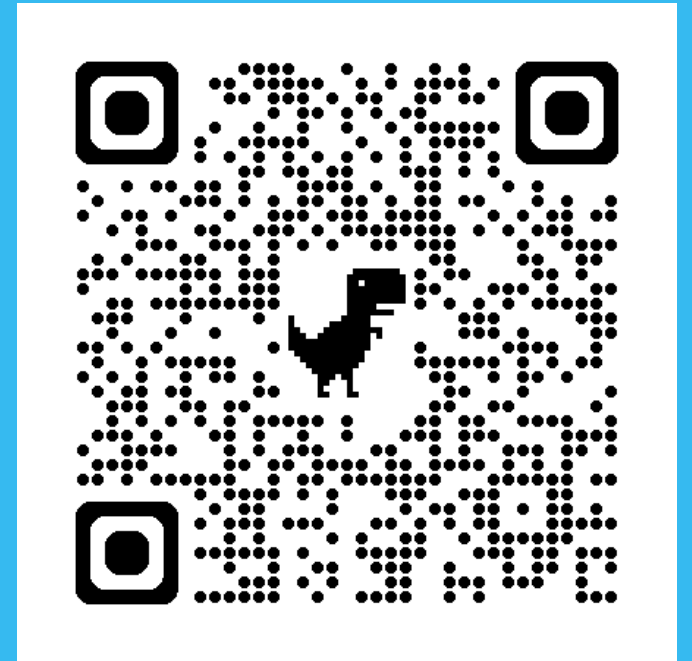
# Help Me Grow Alaska Information

For more information on Help Me Grow Alaska

**Visit** [HelpMeGrowAK.org](http://HelpMeGrowAK.org)

**Call** 1-833-HMG-ALASKA  
1-833-464-2527

**Fax** 1-833-464-2527



# What is PAL-PAK?

## Partnership Access Line - Pediatric Alaska (PAL-PAK)

### Child Psychiatric Consultation Program for Primary Care Providers

The Partnership Access Line (PAL) supports primary care providers with questions about mental health care such as diagnostic clarification, medication adjustment or treatment planning. The PAL team is staffed with child and adolescent psychiatrists affiliated with the University of Washington School of Medicine and Seattle Children's Hospital.

Consultations can be patient-specific or can be general questions related to child psychiatry.

The phone consultation is covered by HIPAA, section 45 CFR 164.506; no additional release of patient information is required to consult by phone.

In addition to mental health consultations, our child psychiatrists offer psychosocial recommendations in every call. PAL-PAK is partnered with Help Me Grow Alaska (HMG-AK), a program that locates resources for your patient and their family. Notify the psychiatrist if you're interested in this service or call HMG directly.

# How Help Me Grow Alaska and PAL-PAK work together

HMG-AK helps to coordinate the PAL-PAK program with the State of Alaska's Division of Behavioral Health and Seattle Children's.



Supporting all children in reaching their full potential.

## Who We Are

**Help Me Grow Alaska** is a program dedicated to promoting healthy child development statewide by providing support and information to individuals and organizations who care for and about children and young adults. Whether you are a parent, provider, teacher or other caregiver with questions or concerns about a child in your life, we are here to help you.

## Who We Serve

- All children and families in Alaska, at no cost and regardless of insurance coverage or type.
- Families with questions or concerns from prenatal through young adulthood.
- Parents, caregivers, teachers, providers or any support person in a child's life.
- Families who need direction and support for connection to resources.

## What to expect when you call Help Me Grow Alaska

Help Me Grow Alaska offers resources and support for all of Alaska's children and their families. Your call will be answered by a family support specialist who will listen to your concerns, help you organize a path forward, and get you connected to the most available and appropriate services and resources in your area of Alaska.

## Developmental Screening

For families with younger children, you may have questions about how your child is developing or expressing behaviors. Therefore, we offer easy access to developmental screenings on our website and follow up support to discuss questions and about what to expect next as your child continues to grow.

## Contact a Family Support Specialist

1-833-HMG-Alaska  
(1-833-464-2527)  
HelpMeGrowAK.org



ALL ALASKA  
PEDIATRIC  
PARTNERSHIP

A Program of the  
All Alaska Pediatric  
Partnership

## Help Me Grow Supports Alaskan Families



Receive personalized care coordination services



Learn about and connect to community resources and local activities

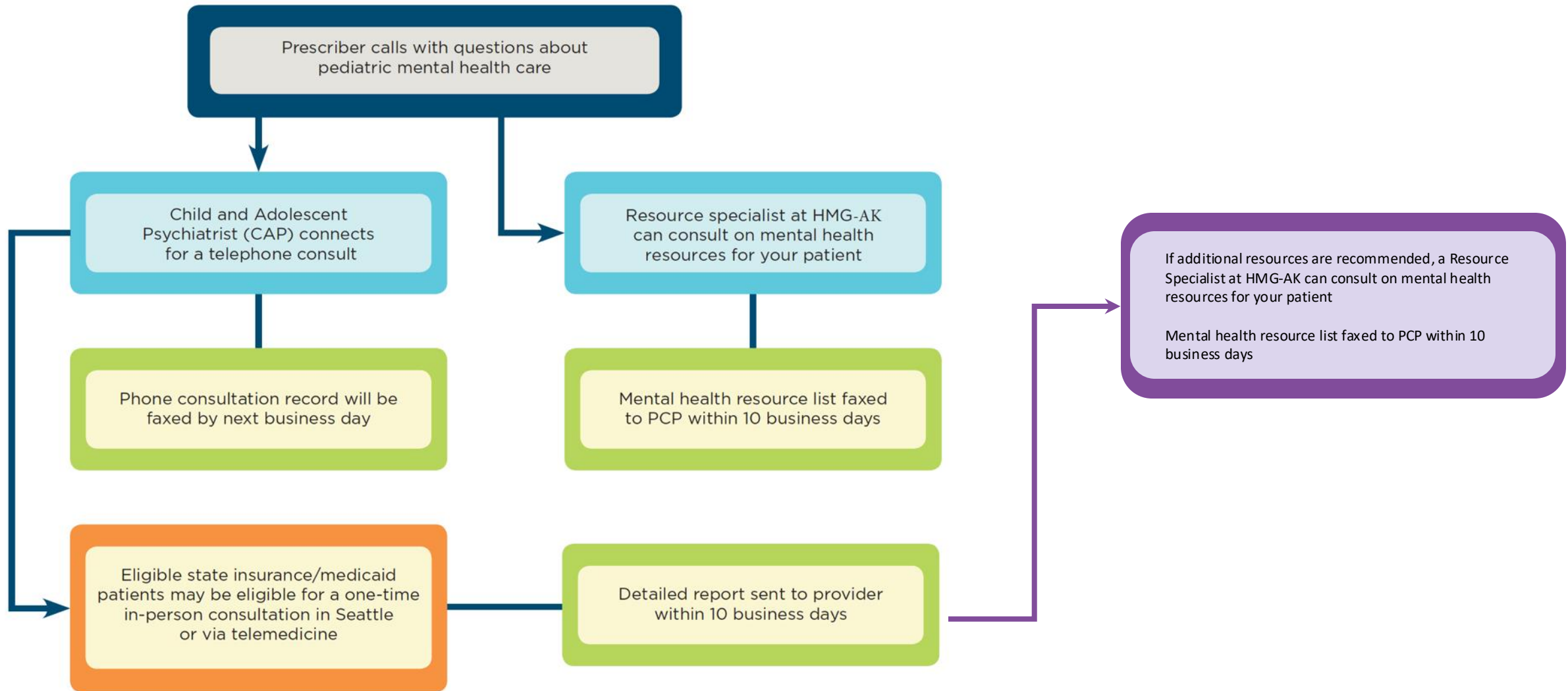


Get answers about child development and parenting



Connect with behavioral or mental health resources for children, young adults and their families





To talk with a PAL-PAK Psychiatrist, call (855) 599-7257.

More information can be found on the [PAL-PAK website](http://www.seattlechildrens.org/PALPAK) at  
[www.seattlechildrens.org/PALPAK](http://www.seattlechildrens.org/PALPAK)



PARTNERSHIP ACCESS LINE - ALASKA  
Child and Adolescent Psychiatric Consultation





# Questions?

## **Tamar Ben-Yosef**

Executive Director, All Alaska Pediatric Partnership

(907) 903-6770

[tamar@a2p2.org](mailto:tamar@a2p2.org)

## **Reanne Honemann-Queja**

Partnerships Lead, All Alaska Pediatric Partnership

(907) 885-3123

[rqueja@a2p2.com](mailto:rqueja@a2p2.com)

## **Sonya Sipos**

Program Manager, Help Me Grow Alaska

[sonya@a2p2.org](mailto:sonya@a2p2.org)

## **Help Me Grow Alaska**

1-833-HMG-ALASKA

(1-833-464-2527)

[www.helpmegrowak.org](http://www.helpmegrowak.org)



ALL ALASKA  
PEDIATRIC  
PARTNERSHIP

